



Bloodstock Festival

05/08/26 to 09/08/26

Traffic Management Plan

Version 1.1
21/03/26

Document created by

Daniel Saunders
Senior Project Manager
07495006691
Dan.saunders@tracsis.com

Tracsis Events Head Office
Unit 2A Spring Hill Industrial Park
Arley, Coventry
West Midlands
CV7 8HN
01676 549001

1. Event Data

Location	Catton Hall
Dates of Event	5 th – 10 th August
Car Park/Campervan Opening Time/Date	1200hrs 5 th August (advertised opening time)
Car Park Closing/Campervan Time/Date	1300hrs 9 th August
Tracsis Events Ops Dates	3 rd August – 10 th August
Build/Break Dates	27 th July - 14 th August
Advance Warning Signage Dates	27 th July - 14 th August
Build Signage Dates	27 th July - 14 th August
Public Directional Signage Dates	4 th August – 14 th August
Type of Event	Music Festival
License Capacity	19,999
Expected Attendance	18,500
Camping Attendance	15,500
Daily Attendance	1,500

3. Overview

3.1 The Proposed Event

Bloodstock Festival is an established Music Festival held at annually Catton Hall since 2005. Ticket sales are capped at 19,999 and all weekend tickets include camping. There are Friday, Saturday and Sunday day tickets for the event.

3.2 Site Description and Access Points

Catton Hall is a 250-acre private country estate situated between Derby and Lichfield on the West Midlands, Staffordshire and South Derbyshire border. For the purposes of the Festival, the site is only accessible via the A38/A513.

Catton Hall in South Derbyshire is home to the glorious private estate of Catton Hall, owned by the same family since 1405. The present Hall was built in 1745 and stands on the banks of the River Trent. The house remains virtually unchanged as does its original collection of fine family and royal portraits plus 17th and 18th century Dutch and Italian paintings. There are family connections with Lord Byron, Napoleon and the Duke of Cumberland, George III's brother.

Although Catton Hall is not open to the general public, private group tours can be arranged all year.

The parkland and Catton Hall itself has hosted regular events for over 25 years, ranging from seminars to celebrations, horse trials to rock concerts (including Bearded Theory Music Festival and Bloodstock Open Air), caravan rallies to game shooting.

Nearby places to visit include the National Memorial Arboretum, Rosliston Forestry Centre and National Forest Adventure Farm.

There are multiple vehicle access points detailed in the table below, also refer to appendix 1: Site Plan.

3.3 Overview of Road Layout in Proximity to the Site

Catton Hall is situated south of Burton-on-Trent between Walton-on-Trent and Alrewas. The A38/A513 serves as the only official route to the event.

The route from the A38 via Walton on Trent is not suitable for event traffic and has a narrow bridge with a 7'-6" width restriction and 3T Max Gross Weight restriction.

4. Event Traffic

4.1 Expected Traffic Levels and Arrival Times

Based on previous years’ experience the vast majority of weekend admission visitors will arrive on Thursday 6th, whilst day admissions will be arriving on Friday 7th, Saturday 8th and Sunday 9th.

This would result in the following maximum volume of vehicles arriving over the event.

Day	Expected maximum number of ticket holders arriving	Expected number of vehicles*
Wednesday*	5,000	2,270
Thursday	9,000	4,090
Friday	1,500	600
Saturday	1,500	600
Sunday	1,500	600

* Access to has been permitted on Wednesday via an additional ticket purchase with campsites open from 12 midday Wednesday 5th August.

Early Arrival is only available to those who have already purchased a Standard weekend + camping ticket and wish to camp in the following standard campsites: Asgard, Valhalla, Midgard, Ironwood, Jotunheim, Hel or the quiet Ragnarok campsite.

VIP, and Accessible camping, will have access from midday Thursday only.

Big Green coach have national coaches arriving Wednesday and Thursday and their Shuttle bus services to and from Tamworth station on Wednesday and Thursday.

The advertised times for the car parks opening are 1200hrs. However, the public car park will be open from 08:00hrs and cars will be able to leave and re-enter the car park 24 hours a day.

4.2 Access Routes

In 2026 there are still substantial obstacles to route planning, with restricted routes, alongside roadworks compromised routes offering few suitable routes. As Bloodstock is served primarily by cars, and these vehicles are unaffected by the weight and width restriction at Chetwynd Bridge, there will still be a signed route to the site from the A38/A513. Campervans and contractors alike will be affected by the restrictions, separate routing requirements will be made for these. This can be found in the build and break appendix for contractors, and in 5.3 Campervans. Routing information is sent to all contractors, crew and ticket holders. Event signage advising the event is not accessible via not appropriate routes will be deployed from the first build day to the final breakdown day.

4.3 Vehicle Labelling System

confidential

4.4 Pre and Post Event Traffic

The site build will begin on 27th July, with contractor's and crew arriving steadily during this period. The site will be clear by 14th August.

It is not expected that large volumes of vehicles will access the site at any one time and all deliveries and contracted service companies will be sent arrival instructions.

Great efforts have been made to appease residents and an appendix will be circulated with this document focusing on the build and break traffic management.

5. Ingress Operations

5.1 Public Parking

5.1.1 Weekend

With the introduction of Wednesday tickets, the parking team will look to prioritise the parking sections closest to the pedestrian walkway for earliest arrivals. As such parking areas have been designated as Wednesday Parking, Thursday Parking, and Overflow Parking. These sections will not be limited by their naming conventions but represent the order with which they will be parked. If peak times dictate the need to park in multiple fields at once, the Overflow field will be used simultaneously, making use of the pedestrian crossing to bring public over to the side of primary parking spots, to then cross back over at the box office pedestrian crossing.

5.1.2 Day

Day parking will be directed exclusively to Gate X12, where vehicles will be managed into designated parking areas by event traffic staff, with spaces allocated sequentially to maintain efficient flow and minimise congestion during peak periods. Additional parking areas will be utilised as required to accommodate demand, supported by clear signage and stewarding along all approach routes. Pedestrian access to the site from the day parking areas will be via the pedestrian crossing from the VIP route, ensuring a safe and controlled transition from parking to the event site.

5.2 Disabled

Disabled Day Parking has 20 designated spaces and can be accessed via X8.

There is also designated Disabled Parking in front of the Main Car Park. See 10.3 for parking plan.

5.3 Campervans

Campervan and caravan parking fields are accessed via gates X19. Pitches will be 8m x 6m with each pitch clearly marked out.

5.4 Rail and Ride

Visitors are directed to the Tamworth railway station by the Bloodstock website. Shuttle Buses, operated by Big Green Coach, are provided to and from the festival site.

The service is provide by three or four coaches depending on demand and runs between Tamworth and the festival coach park.

There will be frequent departures (at least every 20 minutes) on the following days:

Station to Festival:

Wednesday 5th and Thursday 6th - between 11:00 (11am) - 16:00 (4pm)

Festival to Station:

Monday 10th August - between 07:30 (7:30am) - 12:00 (12 - noon)

5.5 Coach Packages

Bloodstock official coaches are provided by Big Green Coach and pick up from 33 locations using around 18 coaches.

All coaches arrive on site on Wednesday 6th and Thursday 7th between 1200 and 1500 hrs.

All coaches leave site on Monday 10th between 0900 and 1130hrs.

Coaches will access site at X8.

Coach providers have been issued clear guidelines on arrival route restrictions.

5.6 Motorbikes

There is unofficial parking at the front of Serpents Lair Car Park for motorbikes.

5.7 Production and Artists

The Production entrance is signposted from the main road by AA signs.

Guest Parking located in the main car park and is sign-posted on AA signage along the main Catton road leading in from both directions. All guests receive a car parking ticket on entry to the car park and are directed to their allocated parking area. They also have the use of the free guest shuttle buses to ferry them to and from the entrance to the guest/media accreditation box office at gate X8 and X12. Bloodstock run the free shuttle bus service from the car park to the festival site and 2 x 17 seater minibuses run from 1200 – 2200hrs on Thursday and 1000 – 2330hrs on Friday – Sunday and 0800 – 1300hrs on Monday.

Media and Artist parking is accessed via X12 and park adjacent to crew parking.

VIP (Serpents Lair) Parking for 700 cars is provided within a dedicated area in the field on the opposite side of the road from the Serpents Lair campsite with an additional pedestrian crossing installed at the crossing point on the road.

5.8 Crew

Crew will be parked in a dedicated car park with 350 spaces for crew which is accessed via X12.

5.9 Pick Up/ Drop Off and Taxi Operation

Bloodstock Festival will be partnering with New Street Taxis for pre bookable taxis.

On a Wednesday and Thursday, the drop off / pick up point will be in the main car park. Ingress at X16, egress at X17.

On a Friday, Saturday and Sunday, the drop off / pick up point will be at X8 coach drop off area.

No ranking of taxis, however, will be permitted. Taxis wishing to rank will be directed to the main car park via X16 where a dedicated space will be designed and set out especially. Through communication from stewards and taxi marshals, cars will be called from the car park, to X8, when a fare is waiting without a booking.

On Monday – ALL pre ordered and ranked Taxis pick up from main car park. Only vehicles showing an Accessible PUDO pass can use X8 for collecting people.

There has been extensive communication and planning between licensing, the Festival, and taxi providers to create a safe and effective drop & collect area whereby visitors get fair and equitable fares. This year New Street taxis will have a representative on site where departing guests can book taxis from.

6. Ingress Routes

6.1 Ingress Traffic Map

All routes are signed in off the A38 Tamworth/A513 junction. The routing information is the information made available to all those attending the festival. Directional signage will be in place to direct the different groups of vehicles to their designated parking area. [See Appendix 2: AA Signage Map.](#)

6.2 Public North

From the North: Follow the M1 Southbound and exit onto the A38 at Junction 28, heading West for Burton / Birmingham. Keep travelling until you pick up the AA road signs, which will exit you at the Alrewas / Rugely / Tamworth A513 turnoff. Follow the signs to the festival.

6.3 Public South

From the West or South (a): From the M5 (from the West) or the M40 (from London), take the M42 Northbound. Between Junctions 8 and 9 take the M6 toll road and exit at T4 onto the A38 Northbound. Follow AA Road signs which will exit you at the Alrewas / Rugely / Tamworth A513 turnoff. Follow the signs to the festival.

From the South (b): Take the M1 from London, and exit at Junction 24, following the A50 to Stoke. After a few miles, you will exit onto the A38 to Burton. Follow the BAA road signs which will exit you at the Alrewas / Rugely / Tamworth A513 turnoff. Follow the signs to the festival.

6.4 Public West

From the West or South (a): From the M5 (from the West) or the M40 (from London), take the M42 Northbound. Between Junctions 8 and 9 take the M6 toll road and exit at T4 onto the A38 Northbound. Follow AA Road signs which will exit you at the Alrewas / Rugely / Tamworth A513 turnoff. Follow the signs to the festival.

6.5 Chetwynd Bridge Works

Chetwynd Bridge has been reduced to single file traffic and traffic signals have been installed.

Due to this being the primary route to the site and the proximity to the A38 (1 mile) Tracsis Events will again seek approval to take control of the traffic signals which have been installed. A chapter 8 accredited operative will be positioned at railway bridge to ensure that vehicles travelling westbound on the A513 do not block the railway bridge preventing high sided vehicles from travelling through the bridge and causing delays to eastbound traffic. The operational hours will be:

Wednesday – 1000hrs – 2400hrs

Thursday – 1000hrs – 2400hrs

Friday, Saturday and Sunday – 1000hrs – 1400hrs & 2100 - 0100

Monday – 0900hrs – 1400hrs.

The intention is to prioritise traffic originating from the A38.

6.6 Emergency Services Access Routes

TBC with the emergency services.

6.7 Pedestrian Routes

There are no pedestrian routes to the site falling alongside the public highway.

6.8 Local Access Routes

All production traffic and crew and public will be advised in advance that there is no route to the site via Walton-on-Trents Bailey Bridge. Signage will be installed advising that there is no access to the festival via this route and directing all traffic back onto the A38 to the next Junction. This signage has been improved since the 2021 event to better prevent traffic accessing site through Walton-on-Trent.

See Appendix 2: AA Signage Schedules.

7. Egress Operation

7.1 Egress Routes during Peak Ingress

All traffic leaving site must do so via the reverse of the inbound route. No traffic will be permitted to exit towards Walton-on-Trent.

7.2 Post Event Egress Routes

All gates will be staffed and vehicle's will be directed back towards the A513, no vehicles will be permitted to exit towards Walton-on-Trent.

Priority will again be given to traffic originating from the A38 travelling eastbound on the A513 and the RAB at the National Arboretum will be the trigger point for allowing more green time for traffic from this direction. In addition, signs, and staff will enforce a turn left onto the A513 towards Tamworth for the M42 and M6 for vehicles wider, and/or heavier than the restriction on Chetwynd Bridge.

9. Pedestrian Safety and Access

9.1 Pedestrian Routes

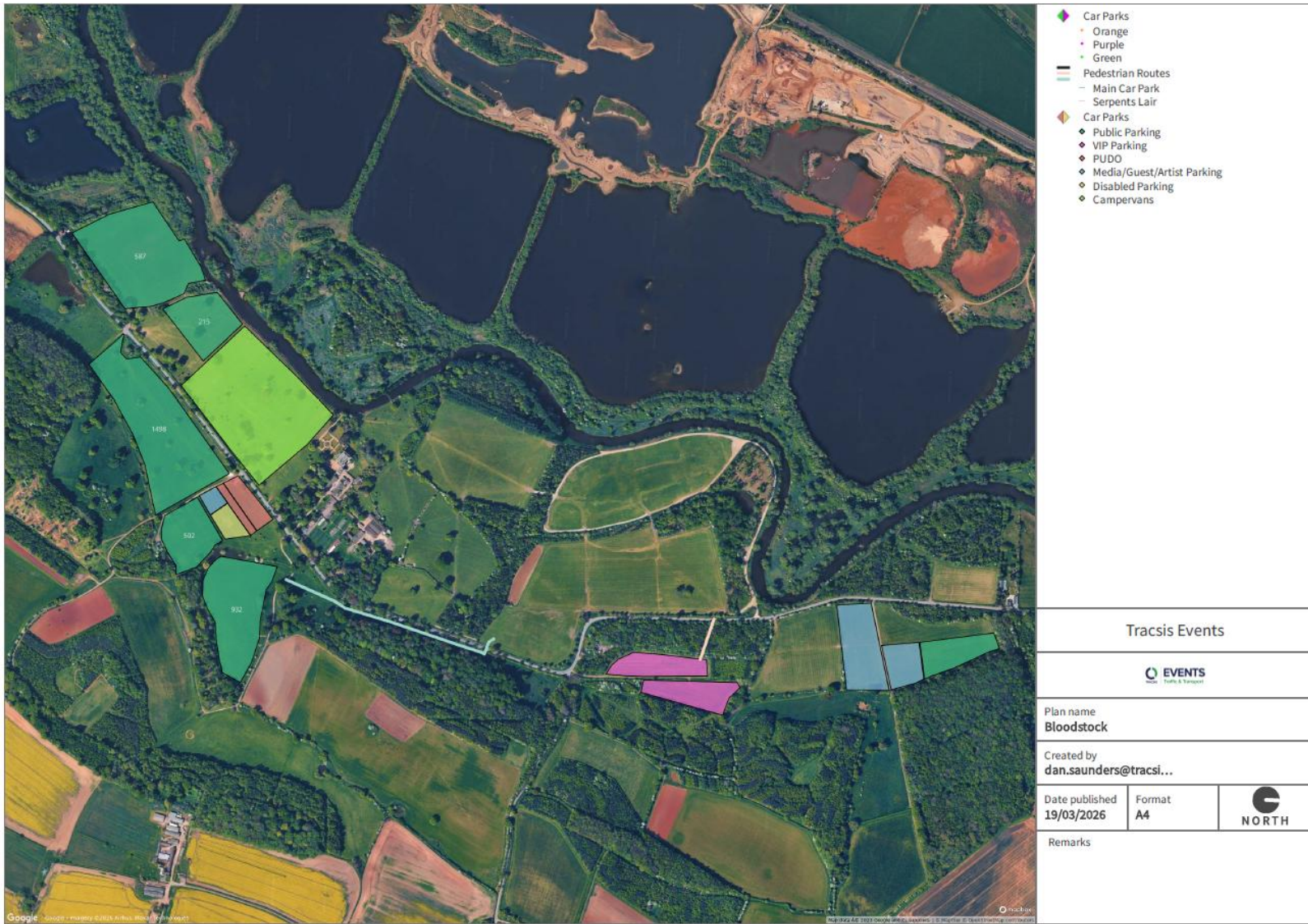
Dedicated pedestrian walkways are sectioned off from the car parks and vehicle entry points. All car parks are parked in order that pedestrians walk forward of incoming vehicles. Vehicles are prevented from accessing pedestrian walking routes or using site access/egress points used by pedestrians during the exit periods.

There are three pedestrian crossing points which are under the control of temporary pedestrian traffic signal, manned by Nottingham Arena stewards. These service:

- The pedestrian route from Overflow Parking through Pick Up Drop Off via X18.
- The pedestrian route from Public Parking to crossing point at X14.
- The pedestrian route from Serpents Lair, Crew & Contractor Camping, & Day Parking to X10.



10.3 Parking Plan

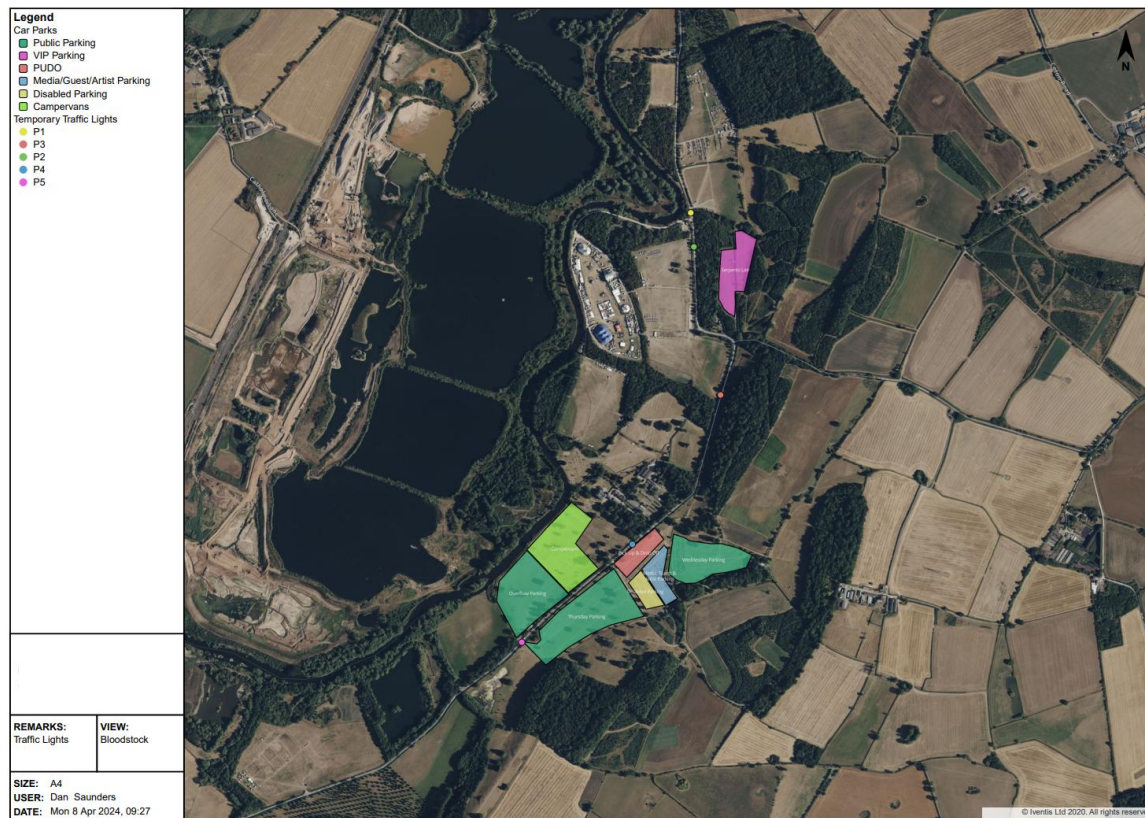


14. Traffic Management

14.1 Traffic Lights

Four-Way Temporary Traffic Lights will be installed at the entrance of Public Parking to aid egress. Traffic Lights will also be located at Pedestrian Crossing points as detailed in 9.1.

All traffic lights including lights used for pedestrian crossings will be manually controlled.



P1: Pedestrian Crossing – X11 to X1

P2; Pedestrian Crossing – Serpent’s Lair to X10

P3: Pedestrian Crossing – Public Parking to Accreditation via X14

P4: Pedestrian Crossing – Public Parking to Drop and Collect via X18

P5: 4 way Traffic Lights at X15 & X19

14.2 Local Highways & TTRO's

The AA will install the 30mph speed restriction, and the temporary traffic lights. AA Signs will also install directional signage to the event over the same dates. The TTRO has been applied for and granted.

14.3 Highways England

Highways England have been consulted during planning and made aware of the event and the event window. They have made assurances regarding the A38 and it's closure during important ingress and egress periods for the event.

14.4 NRSWA Chapter 8 Operatives

Chapter 8 is part of the official red book of highway codes and regulations in the Traffic Signs Manual issued by the Department for Transport.

The Traffic Signs Manual has been developed to offer guidance on the use of traffic signs and reflective road markings. Also known as traffic control, traffic management aims to direct and manage traffic safe and soundly benefiting both vehicles and people.

The code of practice is for the safety of people who work on the highway, such as:

- Operatives
- Supervisors
- Managers
- Planners
- Designers

The regulations and requirements should be followed to reduce the risk of injury or danger of operatives and the public. This is done by increasing the visibility of the obstruction through chevron markings for vehicles.

For some permutations of the traffic plan, installation of the following:

- Traffic Cones.
- Barriers.
- Road Signs.
- Pedestrian Signs.

All road equipment will be installed by, and always managed by, Chapter 8 Officers. When using a vehicle to stop in the road or operate on carriageways, the vehicle will be Chapter 8 compliant.

All vehicles and operatives will be Chapter 8 compliant through the relevant training, and use of correct PPE for Operatives, and correct chevron markings for vehicles.

A map detailing all road equipment will be circulated with this document when available.

15. Signage Plan

15.1 Event Signage

Subject to approval the signage will be installed and removed on the following dates.

Event Signage Schedules		
Date	Installed	Removed
24/07/2026	Advanced Warning Production Signage	
31/07/2026	Route Signage	Advanced Warning
15/08/2026		All Signage

Signage plans will be distributed alongside this document.

16.Ĕ Contingency Planning

16.1 Infrastructure

Metal trackway into the car parks, campervan & caravan fields will be installed. Woodchip is also available onsite in the event of inclement weather.

16.2 Chetwynd Bridge

Please note that any alternate routes and traffic information can be communicated to all ticket holders via text and email. However, as a large number of tickets have already been distributed with arrival directions. It is imperative that the event is given enough time effectively communicate to its event goers, should a decision be taken to close the bridge.

In the event of a closure, an amended signage plan will be in place to reroute all visitors to avoid Chetwynd Bridge and join the A513 from Tamworth.